

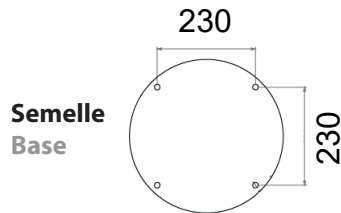
Iloa 275 / Iloa 900

220V-240V 50/60Hz	Standard Norme installation			

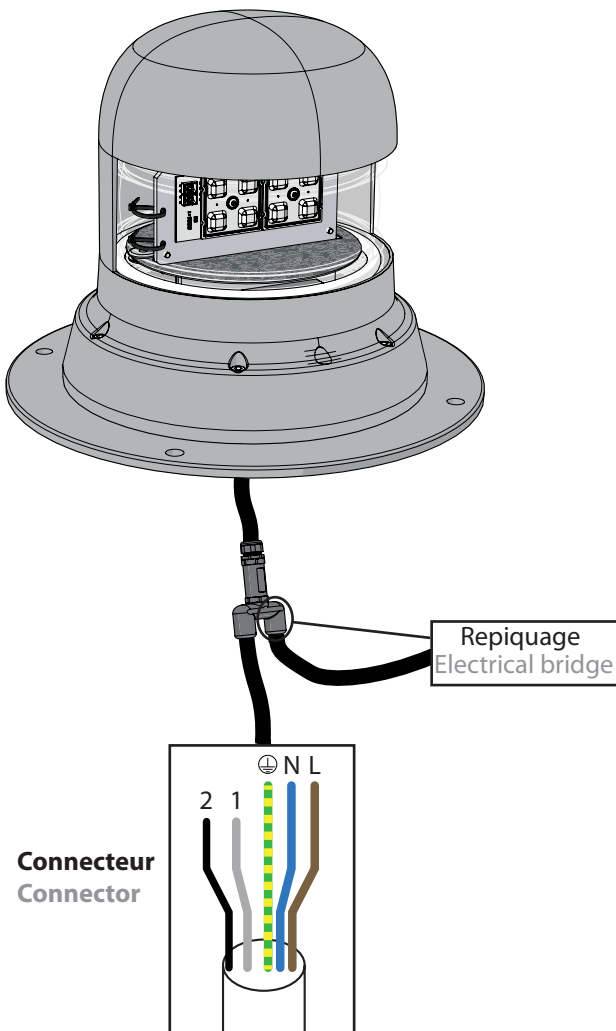
Si le câble extérieur, la source lumineuse ou le driver contenu dans ce luminaire sont endommagés, ils doivent être remplacés exclusivement par le fabricant ou son agent de maintenance ou toute personne de qualification équivalente, cela afin d'éviter tout risque

If the external cable, lighting source or driver contained in this light are damaged, they have to be replaced by the manufacturer or its maintenance agent or an equally qualified worker, in order to avoid any risk

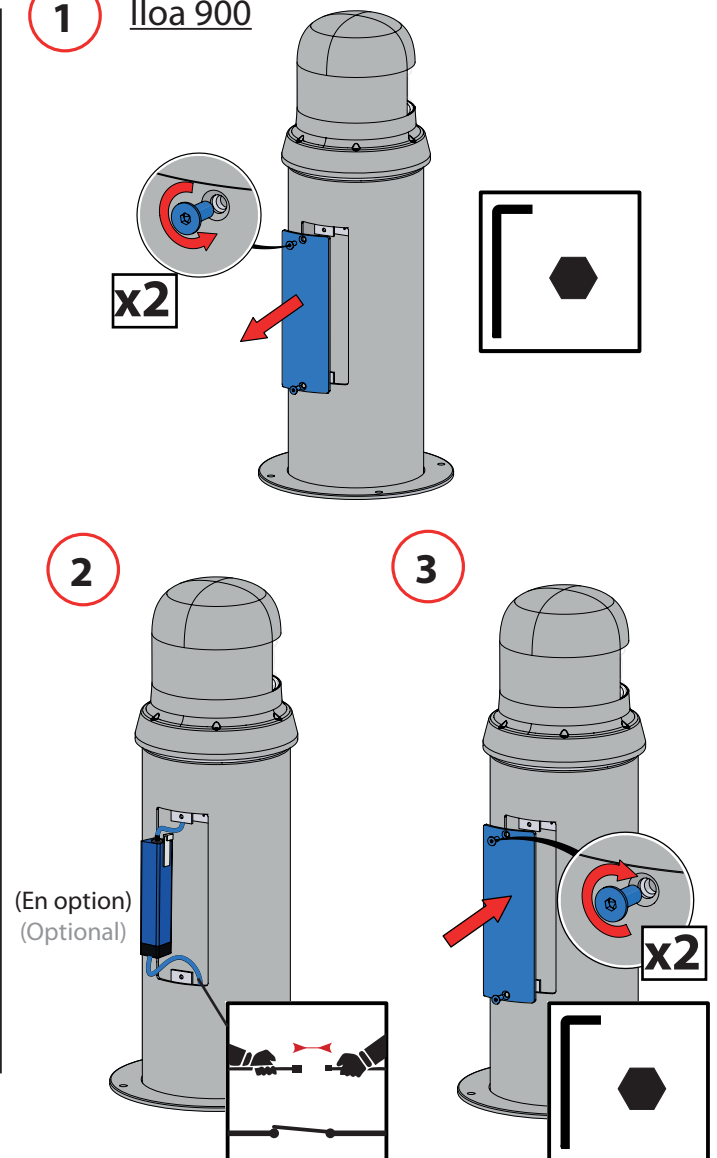
Installation



1 Iloa 275

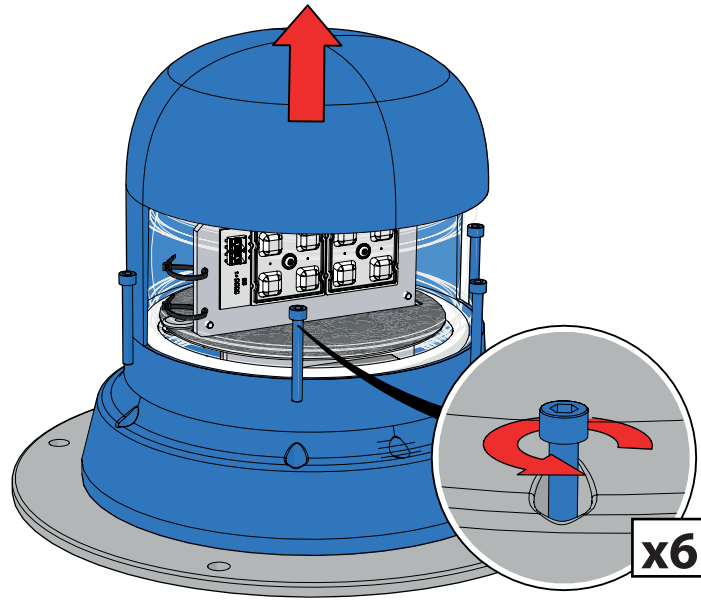


1 Iloa 900

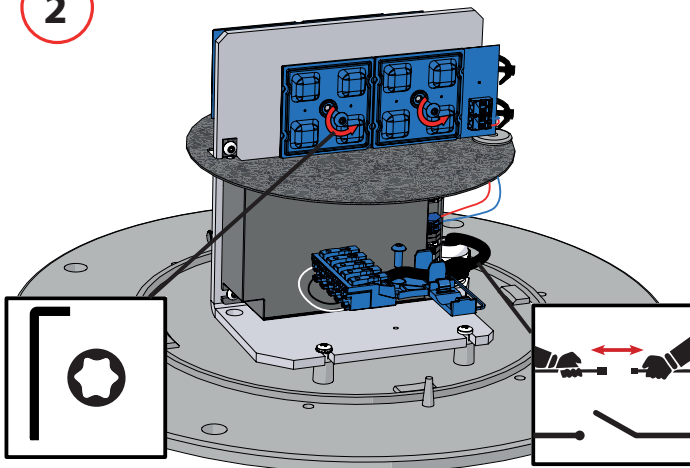


Maintenance

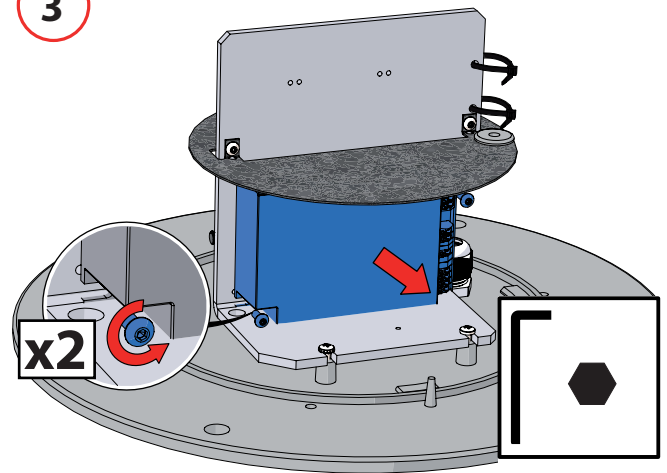
1



2



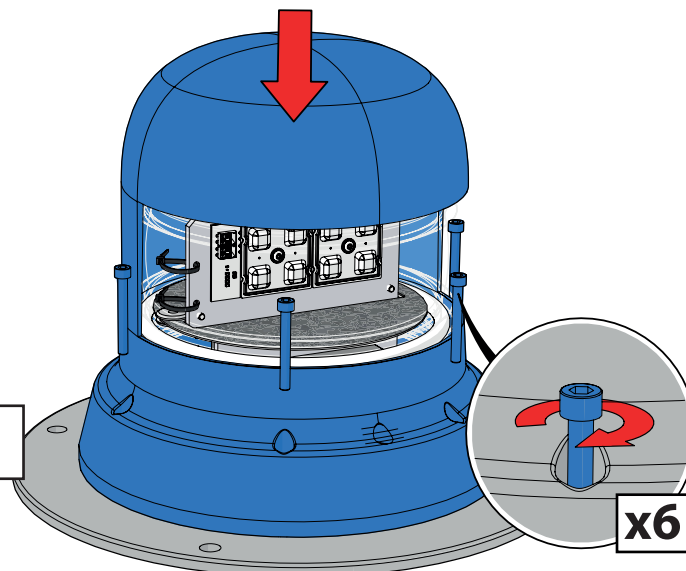
3



4

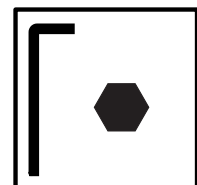
Remonter le driver , le PCB et le connecteur dans le sens inverse des opérations 2 et 3
Reassemble the driver, PCB and connector in the reverse order of steps 2 and 3

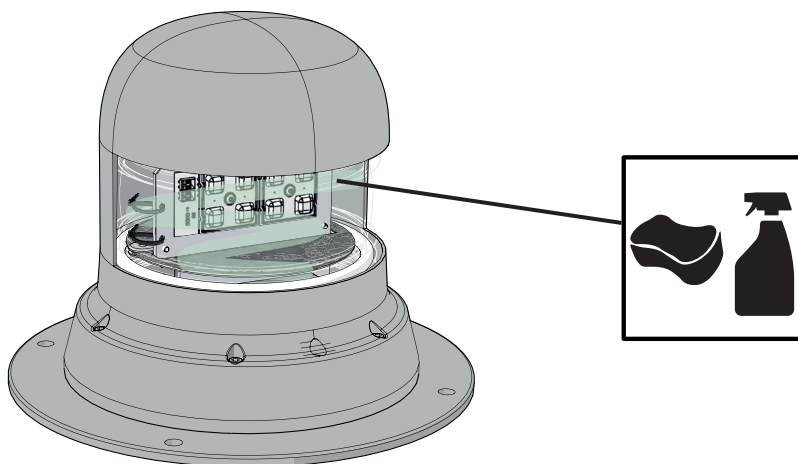
5



Positionnement du joint

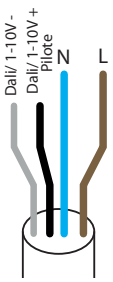
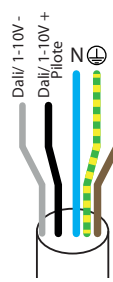
Couple de serrage
Tightening torque
10 N.m





Connexion pour les luminaires précablés Connection for luminaires with outgoing cable

Les connexions électriques du bloc de jonction doivent respecter la même classe d'isolation que le luminaire.
Electrical connections of the junction box have to main the same insulation class the luminaire.

Tension assignée Nominal voltage	220-240V Uniquement pour luminaires avec drivers Only for luminaires with drivers	
Nombre de bornes et capacité de connexion assigné Number of poles and terminal section	CLII-DALI 4x 1.5mm² 	CLI-DALI 5G 1.5mm² 
Méthode de fixation Fixation method	Dépend du bloc de jonction Depend on the junction box	