

# Korner/ Korner 4F



220V-240V 50/60Hz		Standard Norme installation		SCx: 0.1 m <sup>2</sup>	SCx: 0.16 m <sup>2</sup>
----------------------	--	--------------------------------	--	----------------------------	-----------------------------

2 faces

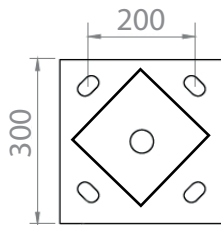
4 faces

**Si le câble extérieur, la source lumineuse ou le driver contenus dans ce luminaire sont endommagés, ils doivent être exclusivement remplacés par le fabricant, son agent de maintenance ou une personne de qualification équivalente, cela afin d'éviter tout risque**

**If the external cable, lighting source or driver contained in this light are damaged, they have to be replaced by the manufacturer or its maintenance agent or an equally qualified worker, in order to avoid any risk**

## Dimensions (mm):

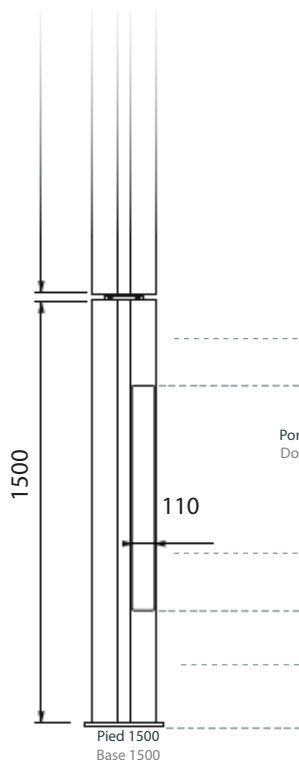
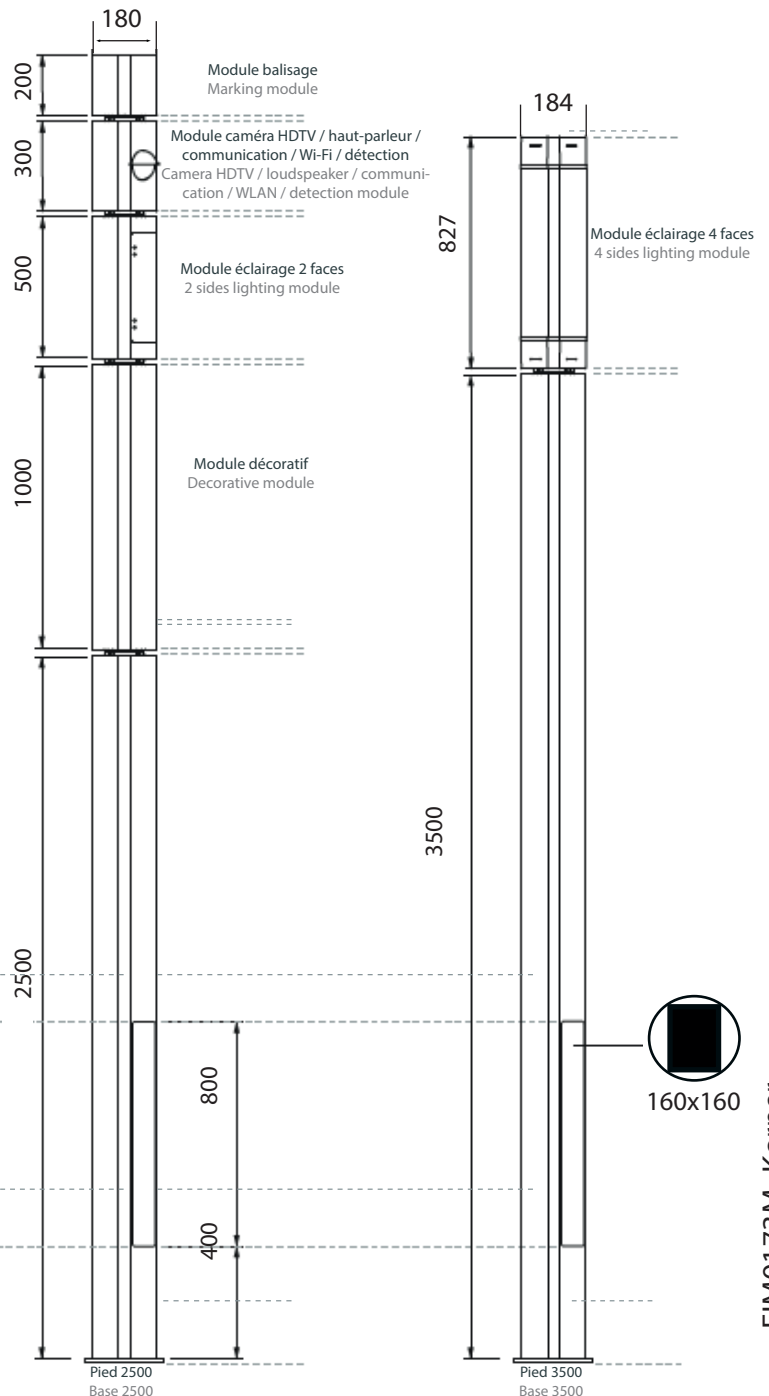
Hauteur maximal possible: 6 m  
 Maximum possible height: 6 m



4 Tiges M14/Ø16x300 (Non fournies)  
 4 anchor bolts M14/Ø16x300 (Not supplied)



**Mât orienté à 45° par rapport à la semelle.**  
**Mast oriented at 45° in relation to the base plate.**



Masse du module éclairage 2 faces  
 2 sided lighting module's mass

**10 kg**  
**22 lb**

Masse du module éclairage 4 faces  
 4 sided lighting module's mass

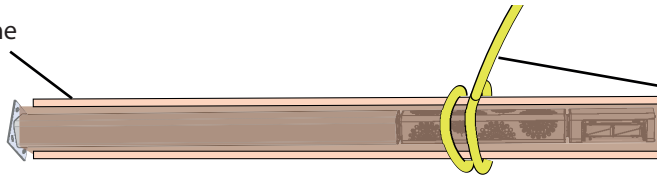
**9 kg**  
**20 lb**

# Installation

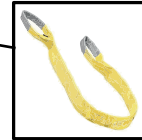


1

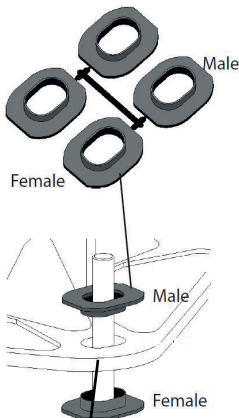
Planche  
Board



Sangle pour lever la borne  
Lanyard for lifting the bollard



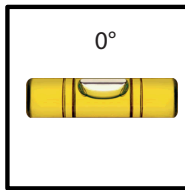
2



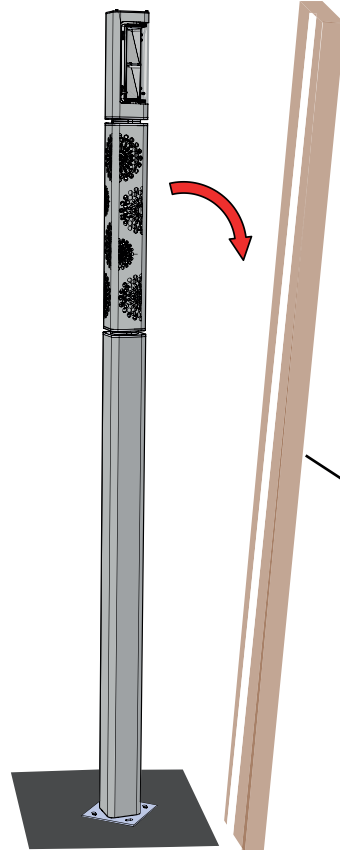
Female

Male

Female



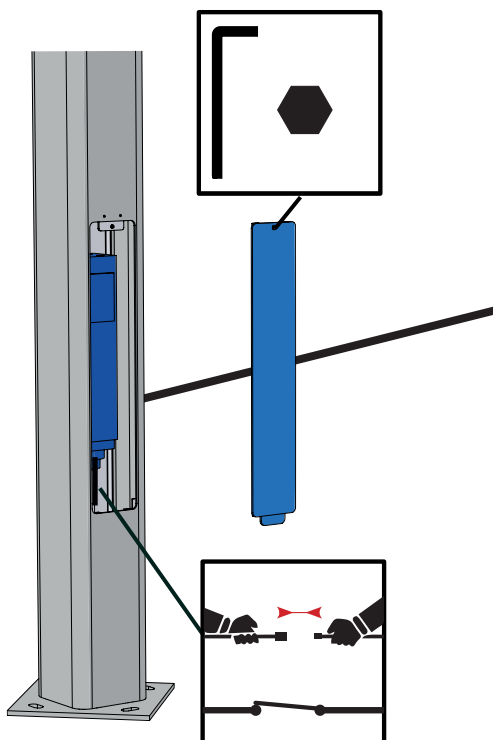
3



Indication côté porte  
Indication of the door side

4

## Raccordement coffret / wiring junction box



Portes-fusibles N°1 et N°2 dédiés à l'éclairage:  
Fuses holders n°1 and n°2 dedicated to lighting:

- Module éclairage 2 Faces / 2 sided lighting module
- Module éclairage 4 Faces / 4 sided lighting module
- Module mise en valeur / Enhanchement module
- Module décoratif / Decorative module
- Module balisage / Light marking module

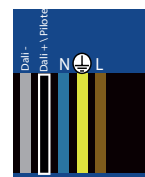
Porte-fusible N°3 dédié au 24/24H:  
Fuse holder n°3 dedicated to 24/24H:

- Module caméra / Camera module
- Module wifi / wifi module
- Module USB / USB module
- Module audio IP / Voice Over IP

Borniers DALI  
DALI terminals

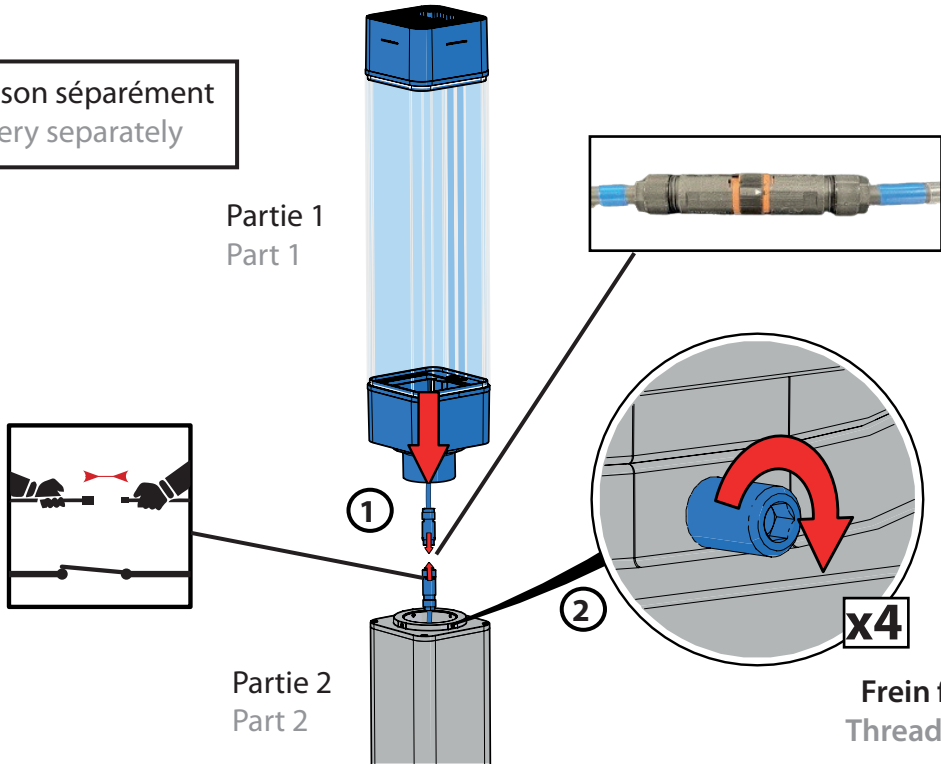
Varistance  
Varistor

Borniers réseaux  
Terminal block



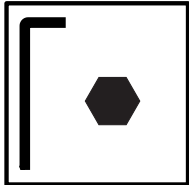
**5** **Uniquement pour Korner 4 faces**  
**Only for Korner 4 sided**

Livraison séparément  
 Delivery separately



Respecter le code couleur  
 Respect the colour code

**Couple de serrage**  
**Tightening torque**  
**6 N.m**

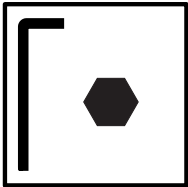


Frein filet  
 Thread lock

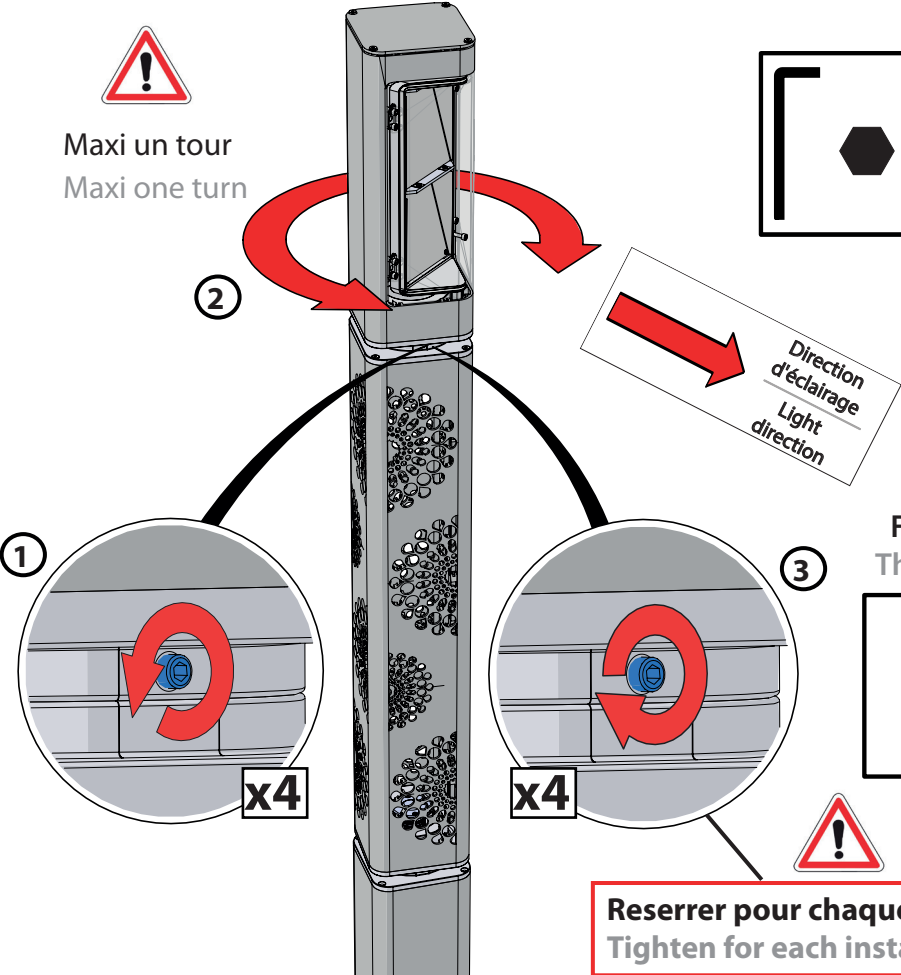
**Une fois l'installation terminée : effectuez les réglages et serrages des modules**  
**Once the installation is complete: adjust and tighten the modules**



Maxi un tour  
 Maxi one turn



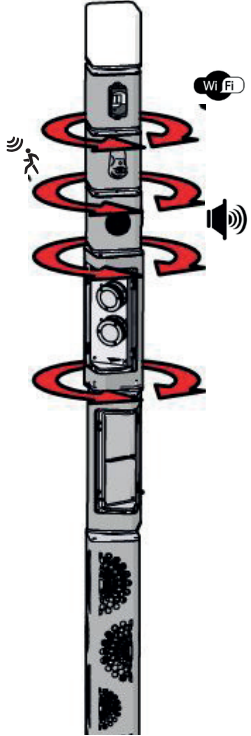
**Couple de serrage**  
**Tightening torque**  
**6 N.m**



Frein filet  
 Thread lock

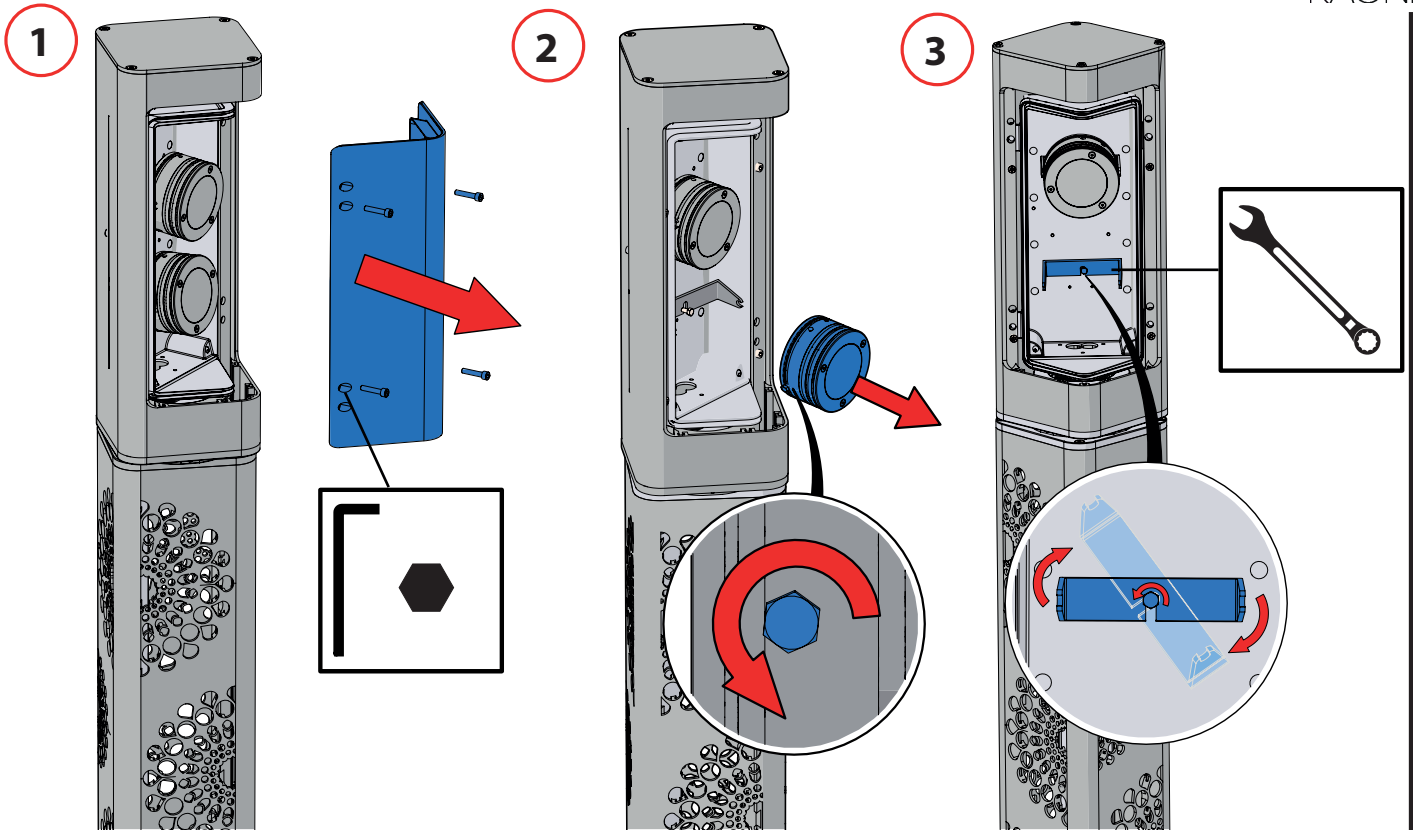


**Reserrer pour chaque installation**  
**Tighten for each installation**



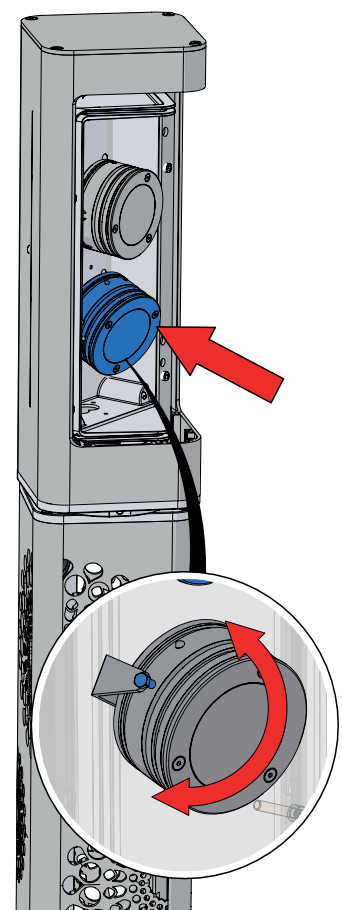
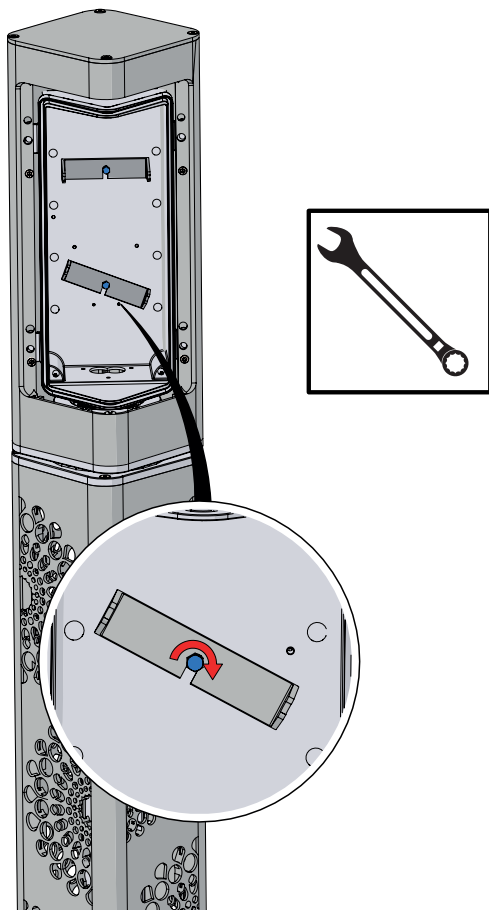
**Réglages module mise en valeur**  
**Module architectural adjustment**

Choisir sa rotation  
Choose your rotation

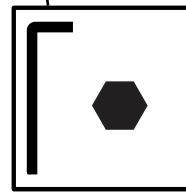
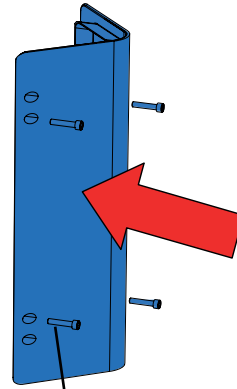
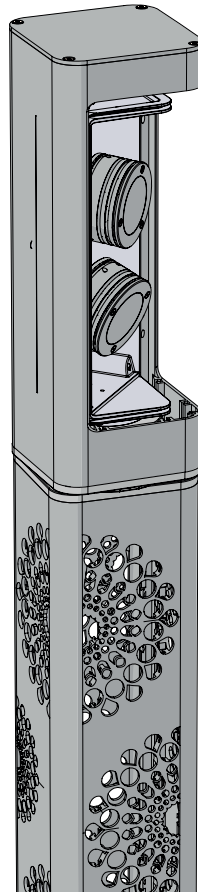


**4** Visser une fois la position choisie  
Screw when the position is chosen

**5** Régler la position du spot  
Adjust the position of the spotlights

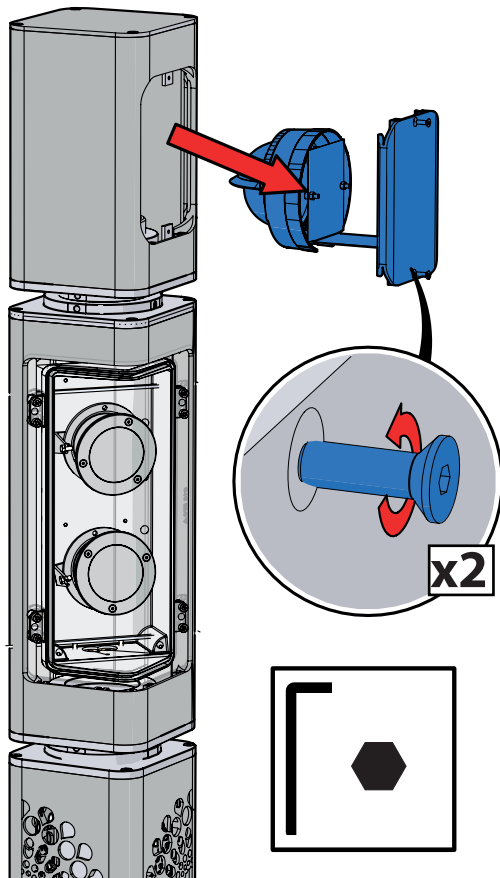


6

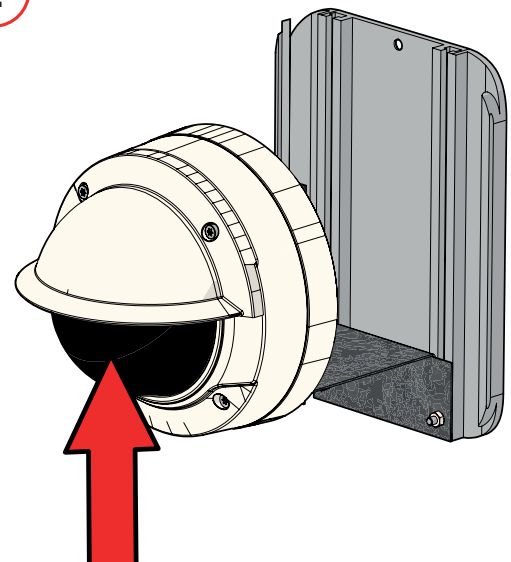


**Réglages de l'angle de vision de la caméra**  
**Camera viewing angle settings**

1



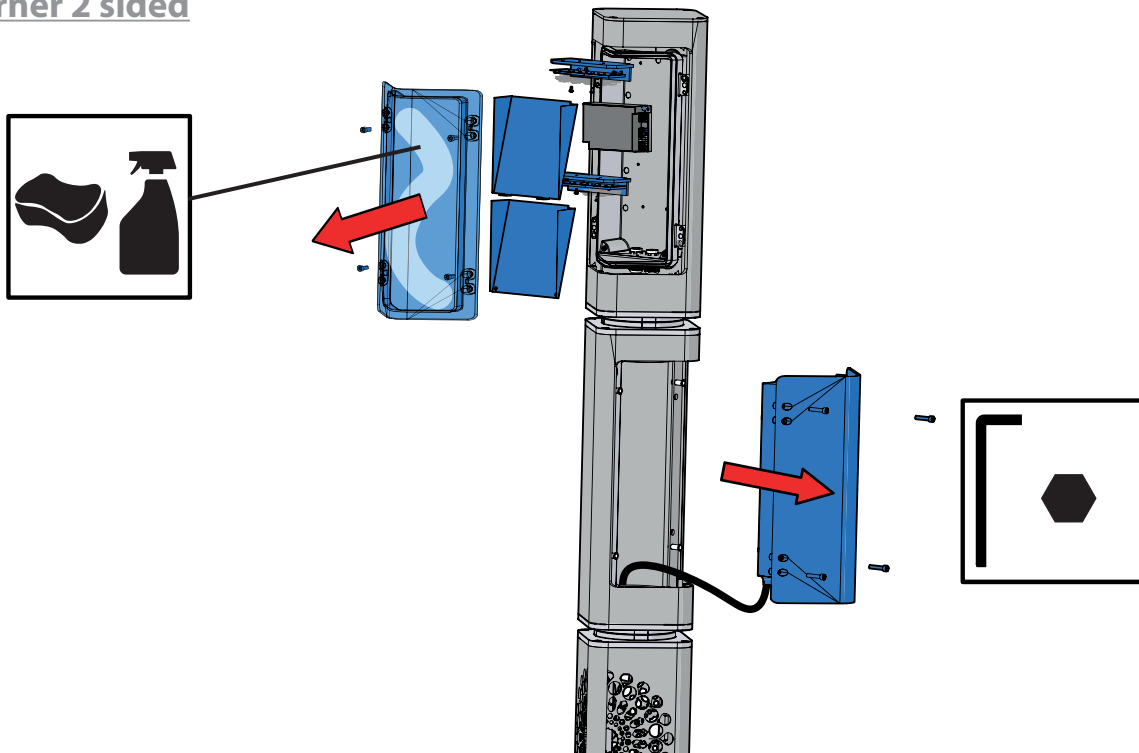
2



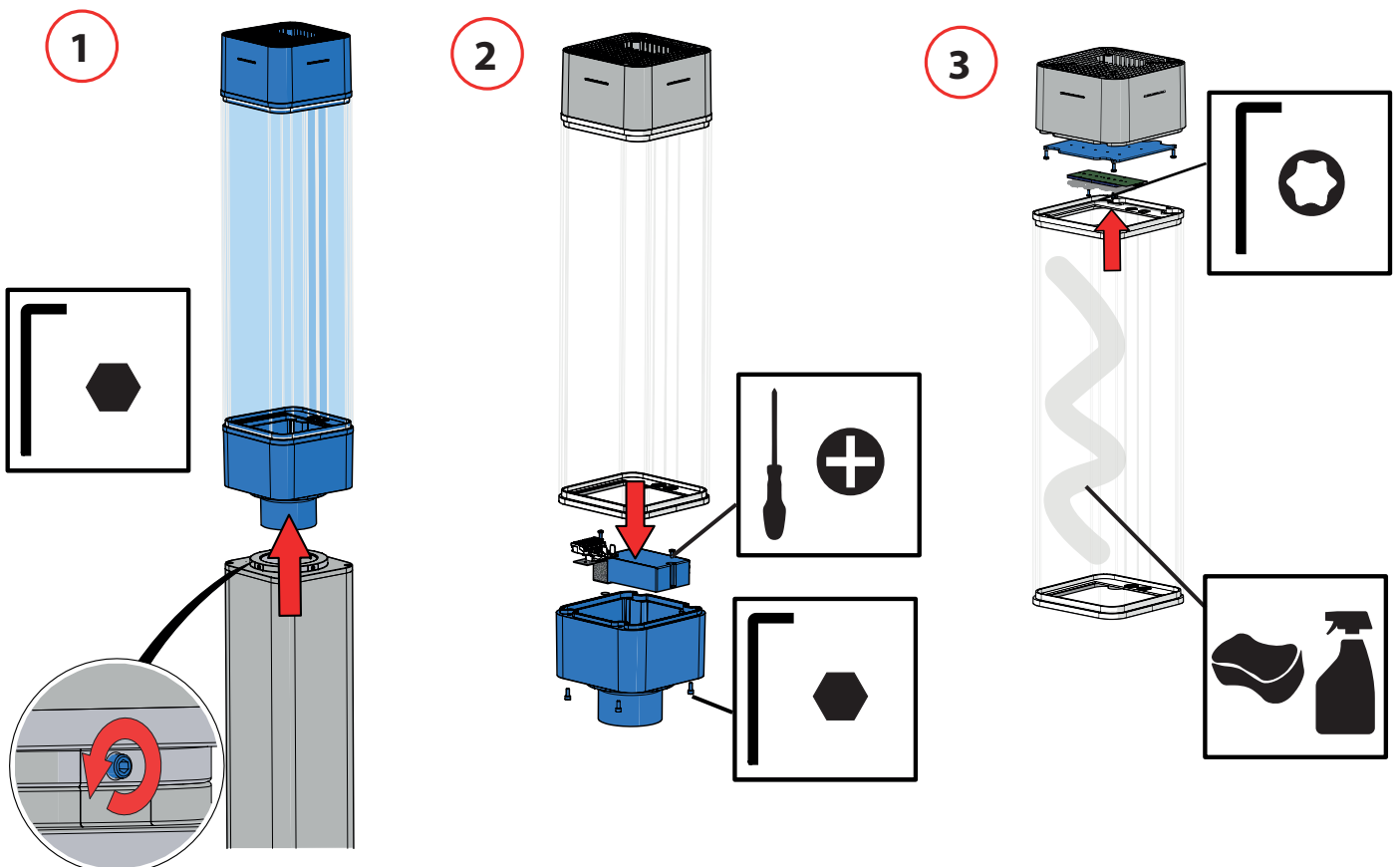
Voir la fiche d'installation de la caméra  
 pour régler l'angle de vision  
 See the camera installation sheet  
 to adjust the viewing angle

# Maintenance

## Korner 2 faces Korner 2 sided



## Korner 4 faces Korner 4 sided



- 4** Fermer le luminaire en faisant toutes les opérations précédentes dans le sens inverse.  
Put the system back by making all the previous operations in the reverse order.